




# YIDOR LASER Continuous Laser Cleaning Machine



## 1. Price and Payment:

1000w/1500w/ 2000w continuous laser cleaning machine	FOB QINGDAO PORT / Set
Payment	TT (30% before production, 70% before delivery)
Price validity: Until 31 <sup>ST</sup> March, 2023	
Manufacture time: 5-7 working days	
Warranty: 2 years for the Max laser source, 1 year for the other parts.	

## 2. Consumables (attached):

Spare Parts	Quantity	lifetime	Pictures
Protective lens	5	2-3 weeks /piece	

Remark: A protective lens is USD 10, considering future usage, you can buy some extra.

### 3. Specification:

<b>Model</b>	YDW-C1000/YDW-C1500/YDW-C2000
<b>Power</b>	1000W/1500W/2000W
<b>Laser source</b>	Max laser source (continuous type)
<b>Supplyltage</b>	Single-phase 220V ± 10%, 50 HZ AC
<b>Fiber interface</b>	QBH
<b>Fiber length</b>	10m
<b>Cleaning head weight</b>	800g
<b>Swing pattern</b>	straight
<b>Cleaning width</b>	1~170mm
<b>Swing frequency</b>	≤300HZ
<b>Laser wavelength</b>	1080 ± 10 nm
<b>Cooling way</b>	Water cooling
<b>Water chiller</b>	Hanli water chiller
<b>Package size</b>	141*61*105cms
<b>Package Weight</b>	175KGS

#### 4. Machine details:



#### 1000W/ 1500W/ 2000W Max laser source (continuous type)

The laser source is the core component of a machine, which provides energy for the operation of the machine.



#### RuiFar Hand-held laser head

The cleaning head weighs about 800g, is hand-held, and is easy to operate. The length of the fiber optic cable is 8 meters, which can clean different types of products.



#### Control panel

Used to adjust the parameters of laser output power, frequency, duty cycle, etc.

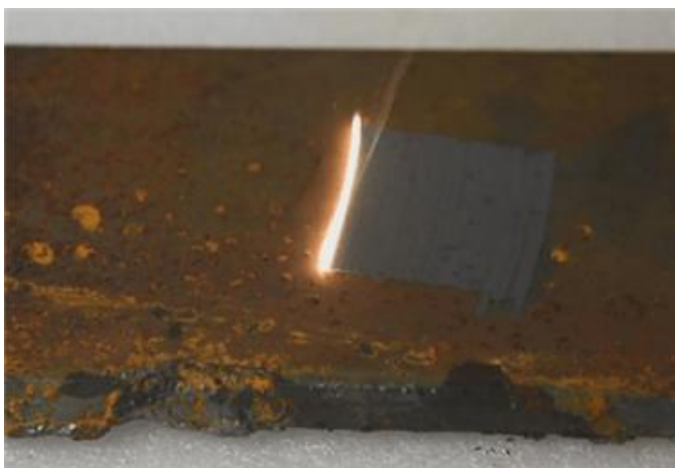
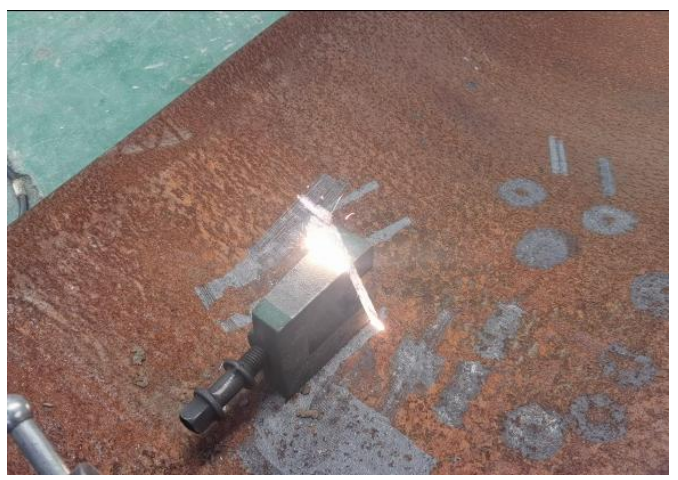


### 1000W/ 1500W HANLI water chiller

It cools the laser source and laser head through water circulation, and automatically adjusts the temperature according to different working environments, without changing the setting parameters. If it is not turned on or the water flow is insufficient, the laser will not be generated, thus protecting the laser.



**5. Sample images:**





## **6. Continuous Laser Cleaning Machine Application:**

Fiber Laser cleaning machine is professional for metal material cleaning, coated cleaning, etc. Such as such as carbon steel, stainless steel, coated products, etc. Due to the high energy of the continuous mode, it is mainly used for cleaning large buildings (such as bridges, hulls) and thick metals such as cleaning house frames, bridges, etc.

## **7. Warranty:**

1. The laser source is guaranteed for two years, and the other parts are guaranteed for one year. Fiber optic cables is not warranted, as long as the fiber optic cable is not intentionally twisted, it can be used always.
2. If the machine and accessories are damaged due to human factors, we will not warranty.

## **8. YIDOR Laser Cleaning Machine Features (Advantage):**

1. It can easily solve the environmental pollution caused by chemical cleaning without using any chemicals and cleaning liquid.
2. The laser can be transmitted through optical fiber, which is easy to operate at a long distance. It can clean parts that are difficult to reach by traditional methods and can be used in some dangerous places to ensure personnel safety.
3. Laser cleaning can remove various contaminants on the surface of metal materials to achieve the cleanliness that cannot be achieved by traditional cleaning.
4. The cleaning system can be used stably for a long time, with high cleaning efficiency and low operating cost.





## 9. Company Introduction:

YIDOR LASER is the manufacturer of laser machine . Our main products include Fiber Welding Machine, Fiber Marking Machine, Fiber Cutting Machine and CO2 Laser Cutting and Engraving Machine. For more details of our machine.

We treat every customer as family, and we also hope YIDOR LASER will be a trustworthy and reliable partner of you.





## 10. Production workshop:



*Thanks for your reading!*